

Figure 7, Source Data 1. Original membranes associated with Figure 7, panel C, showing the treatment of STC-1 cells. The first lane represents GFP treatment, the second lane corresponds to treatment with a *CaMKKβ* overexpression plasmid, and the third lane reflects treatment with a *CaMKIV* overexpression plasmid.

Figure 7F

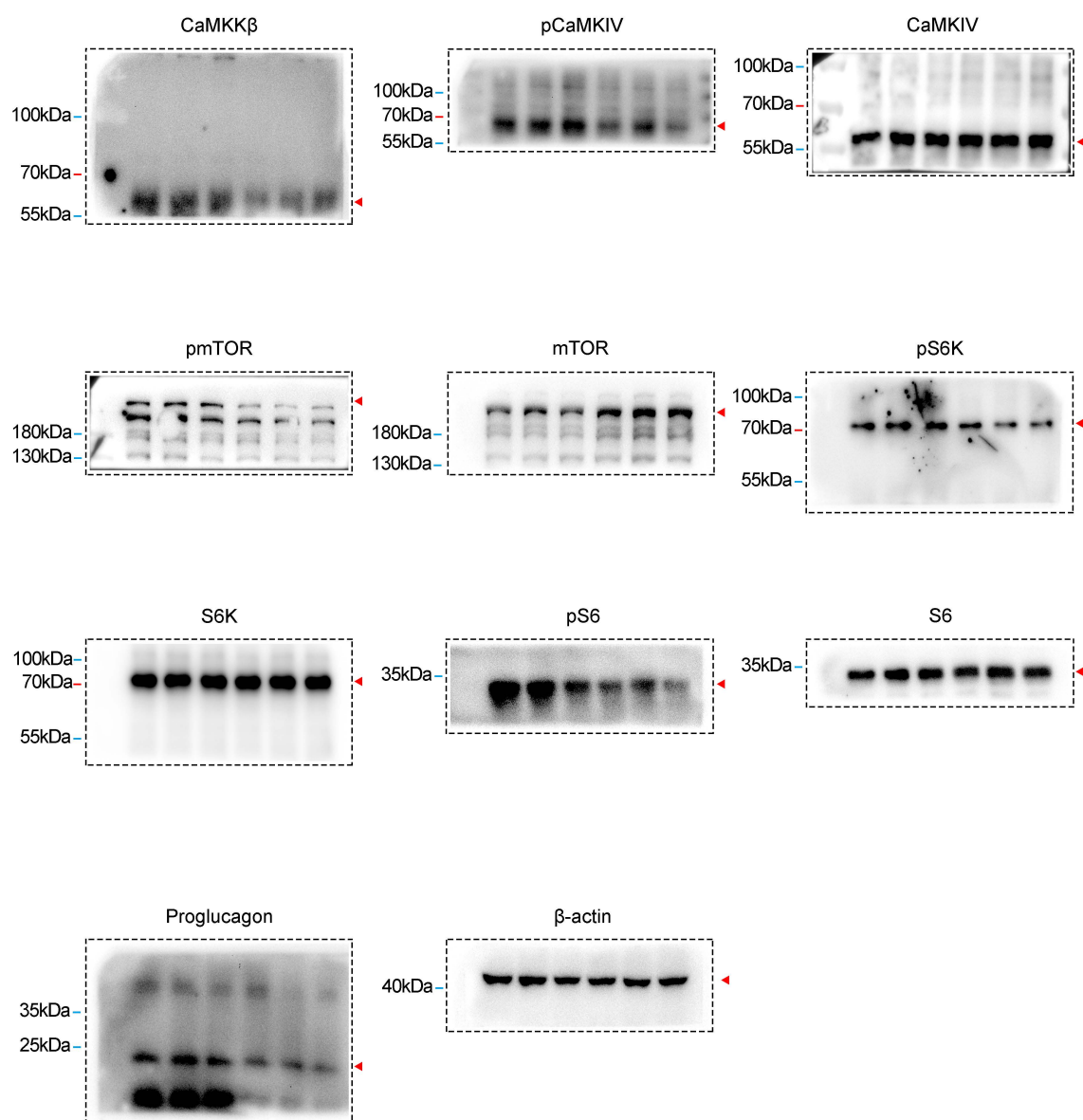


Figure 7, Source Data 1. Original membranes shown in Figure 7, panel F, depict the treatment of STC-1 cells. The three lanes on the left were treated with DMSO, while the three lanes on the right received treatment with STO-609.

Figure 7I

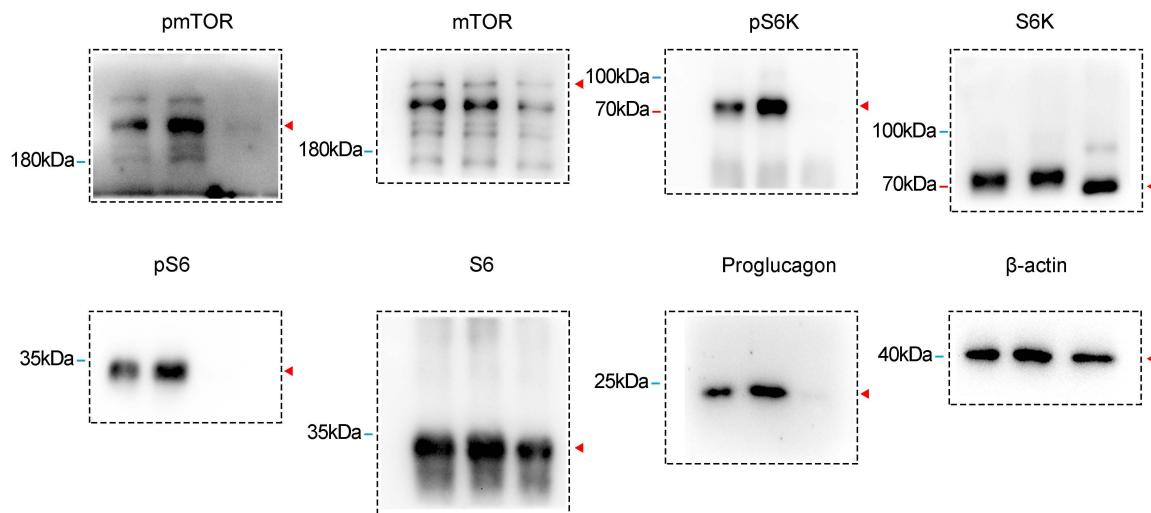


Figure 7, Source Data 1.Original membranes corresponding to Figure 7, panel I, illustrating the treatment of STC-1 cells. The first lane represents DMSO treatment, the second lane corresponds to Yoda1 treatment, and the third lane shows the effects of Yoda1 combined with Rapamycin treatment.